

数字量直流漏电流传感器是传统模拟量直流漏电流传感器的升级版。本型传感器采用ARM高性能单片机，直接将线圈震荡信号经过采样电阻采样后，通过软件编程对信号进行数字滤波处理和幅值运算。电路结构为纯数字式，无运算放大器模拟器件，降低了温度和环境变化造成的不良影响。传感器的通讯接口为RS485，输出为数字信号，减少了传输过程中造成的干扰。

特点

- 低零漂
- 并连接线，方便施工
- RS485数字量通信，抗干扰能力强
- 标准MODBUS-RTU通信协议

说明

- 额定电流：10mA~100mA
- 准确度等级：1.0级
- 通信接口：RS485
- 工作温度：-25~70℃
- 符合UL94-V0

应用

- 直流屏
- 通信基站
- 智慧能源
- 信号监测
- 直流电流差值测量
- 直流电源系统绝缘在线监测

型 号	额定电流 mA	测量范围 mA	通讯接口	电源电压 V	频 率 HZ	精度 Ta=25℃ %	工作温度 Ta (℃)	绝缘电压 Vi KV	响应时间 ms	原边窗口 mm	电气连接 NO.	外形 NO.
DDLS-0.01N	10	20	RS485	12	DC	1.0	-25...+70	2.5	< 1000	Ø21	13/14	29
DDLS-0.01C	10	20	RS485	12	DC	1.0	-25...+70	2.5	< 1000	Ø20	13/14	30
DDLS-0.01C7	10	20	RS485	12	DC	1.0	-25...+70	2.5	< 2000	Ø35	13/14	31
DDLS-0.01C8	10	20	RS485	12	DC	1.0	-25...+70	2.5	< 2000	Ø45	13/14	32
DDLS-0.01C10	10	20	RS485	12	DC	2.0	-25...+70	2.5	< 2000	Ø55	13/14	33
DDLS-0.01C11	10	20	RS485	12	DC	2.0	-25...+70	2.5	< 2000	Ø72	13/14	34
DDLS4-10mA	10	20	RS485	12	DC	1.0	-25...+70	2.5	< 1000	Ø19	15	35



29



30



31



32



33



34



35

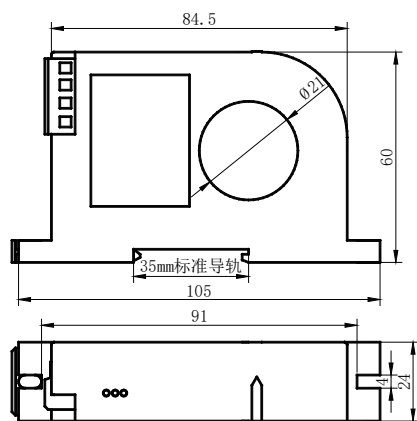
电话: +86-533-381-8721\8722\8723
传真: +86-533-381-8724

山东元星电子有限公司
山东省淄博市张店区科技工业园英雄路39号
邮编: 255095

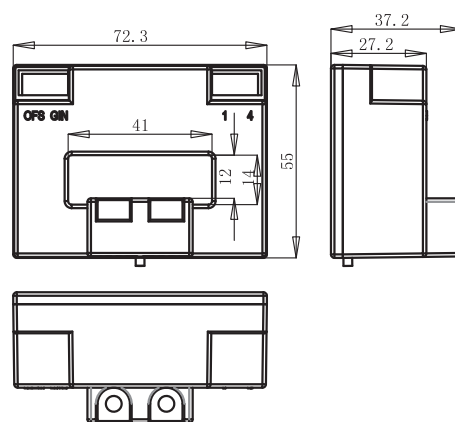
www.yuanxing.net
sales@yuanxing.net

外形安装尺寸

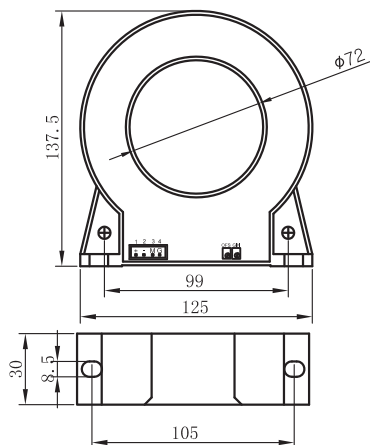
25



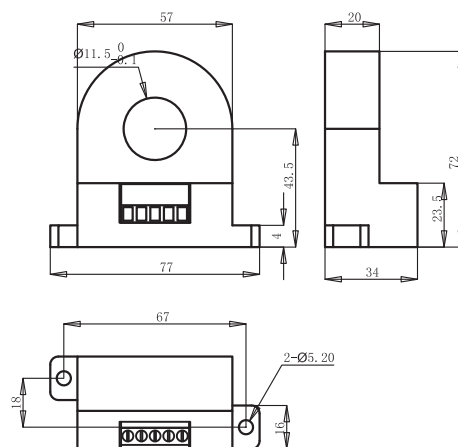
26



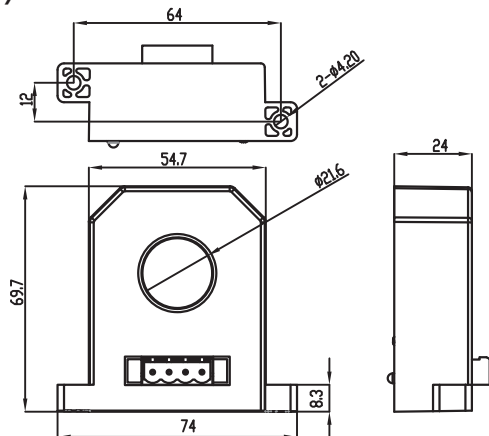
27



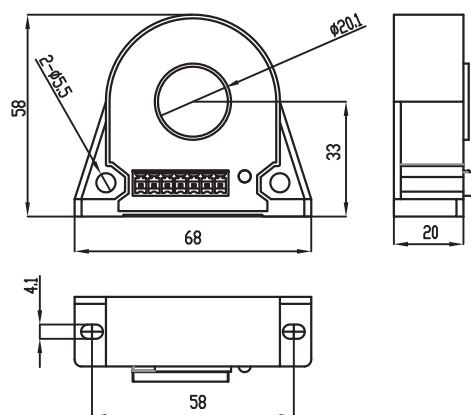
28



29

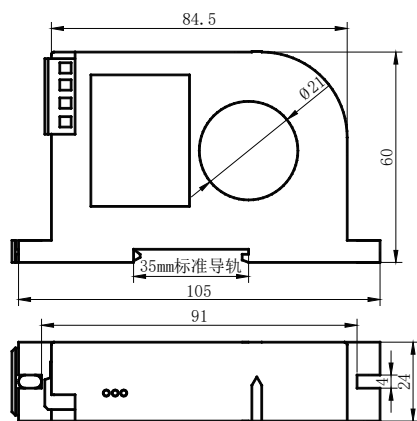


30

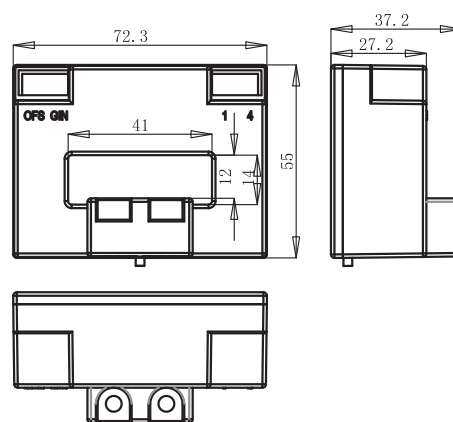


外形安装尺寸

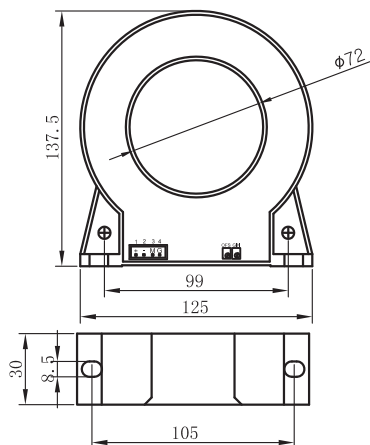
25



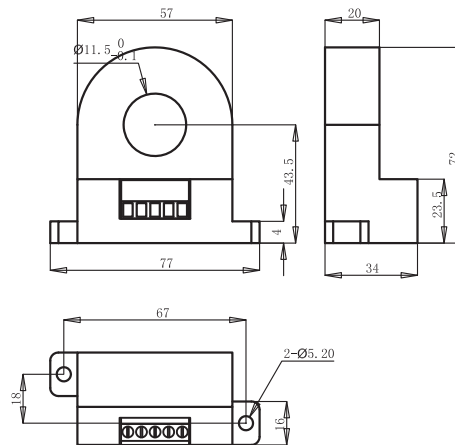
26



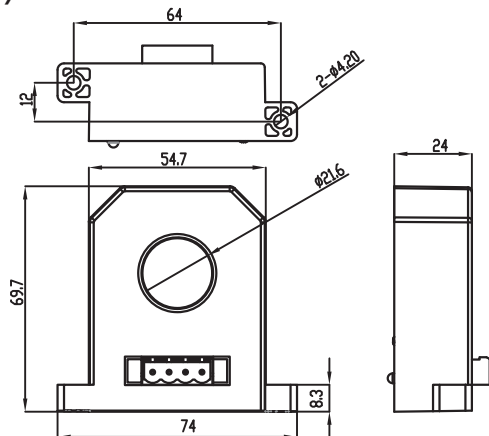
27



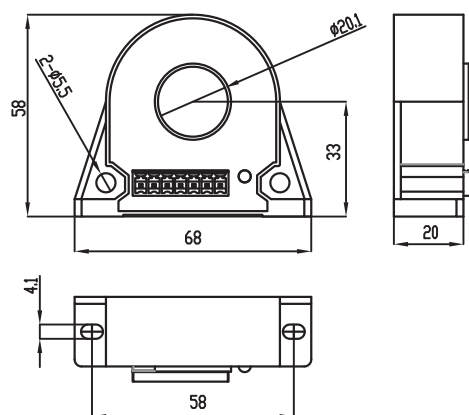
28



29

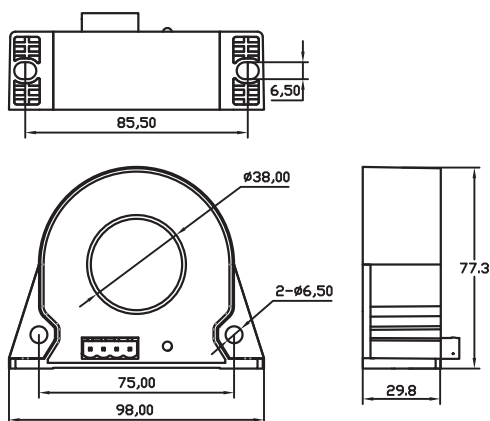


30

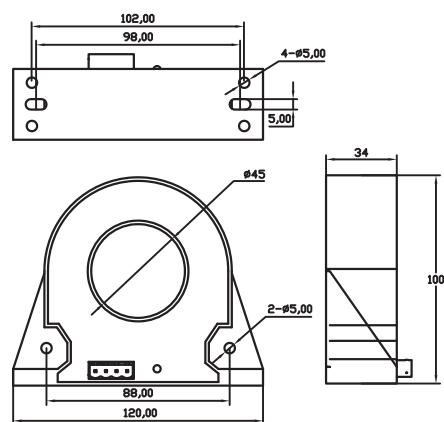


外形安装尺寸

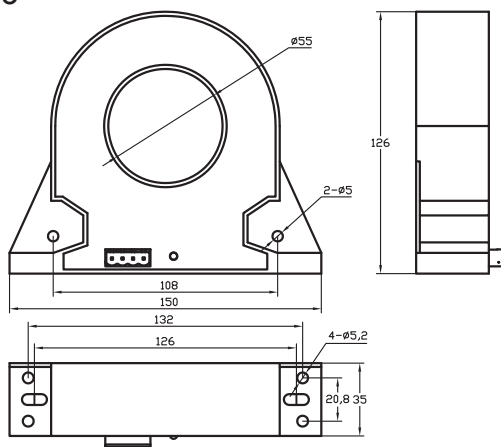
31



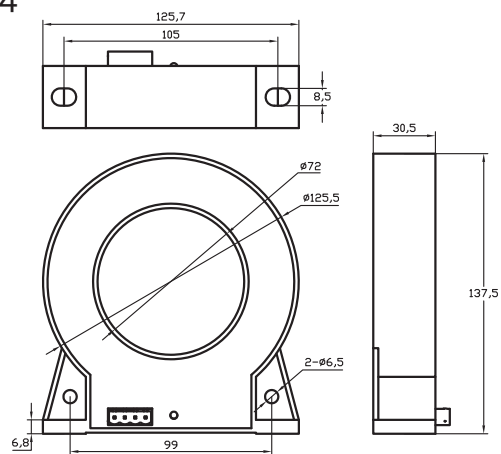
32



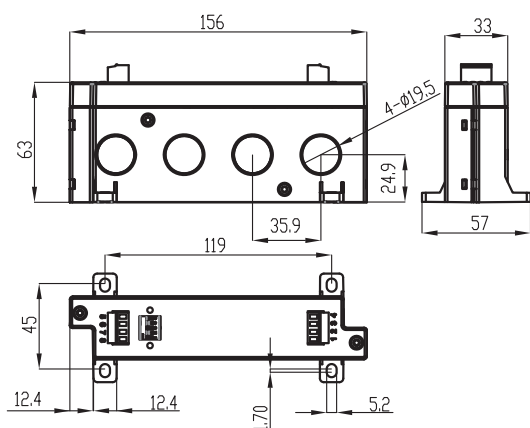
33



34

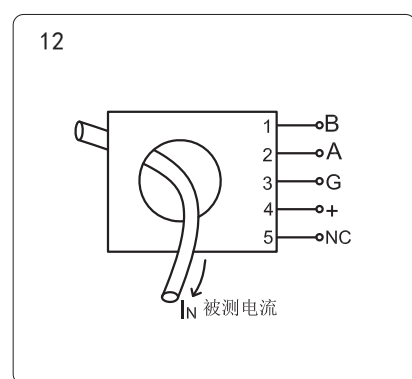
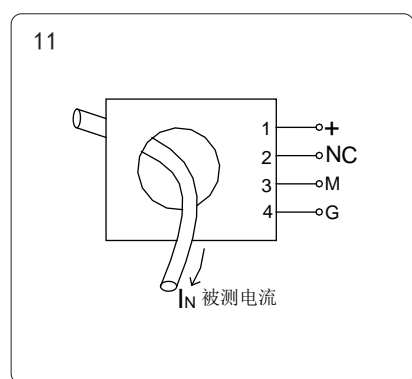
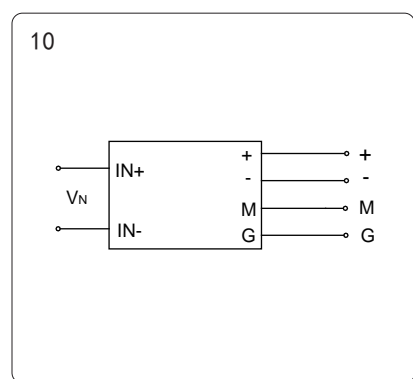
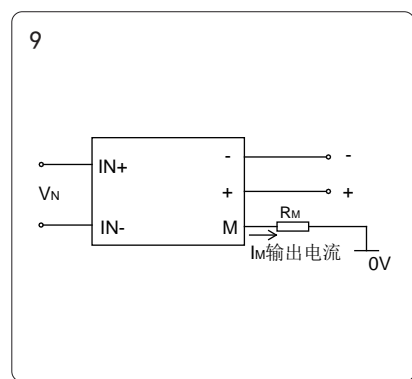
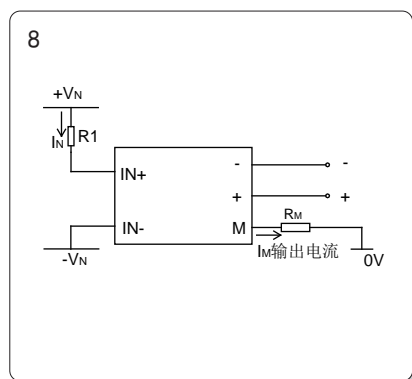
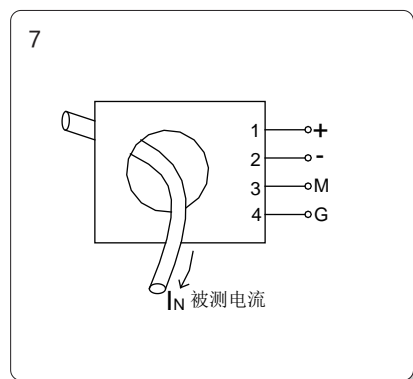
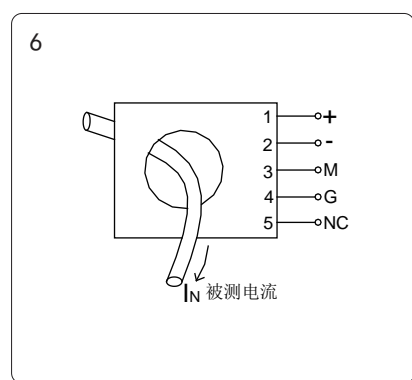
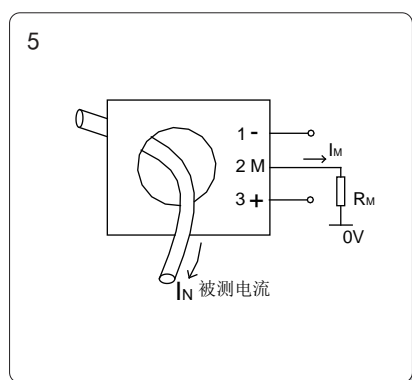
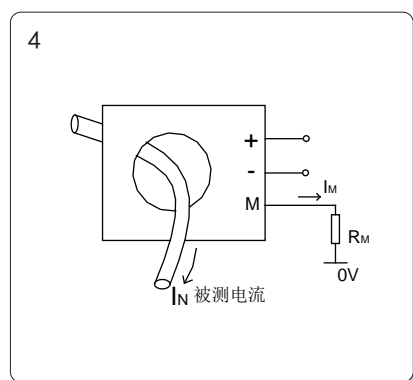
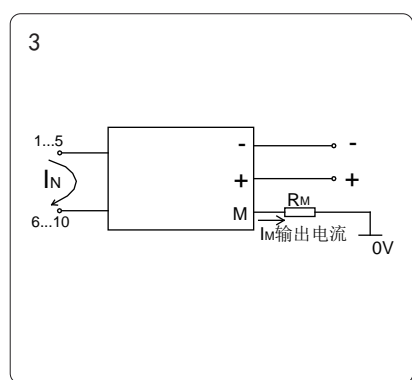
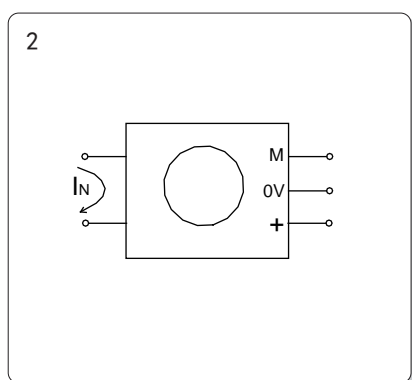
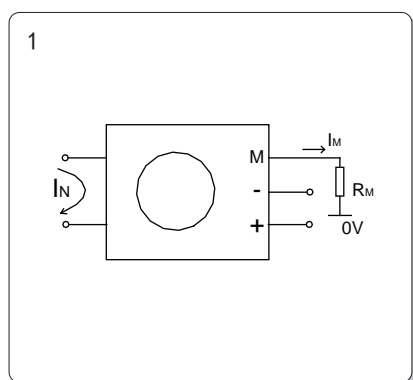


35



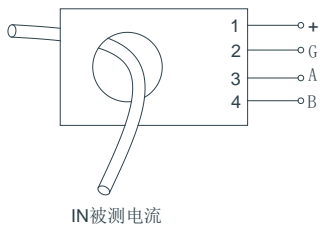
36

电器连接图

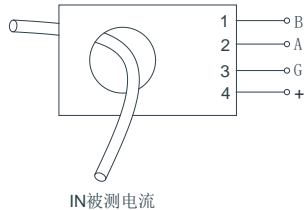


电器连接图

13



14



15



16

17

18

19

20

21

22

23

24