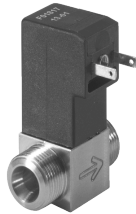




A red pole with multiple white directional signs pointing in various directions. Each sign displays a distance in kilometers and the name of a city or country. The signs are arranged in a circular pattern around the pole, with some signs partially obscured by others. The background is a clear blue sky.

Distance (km)	Location
7.124	Phong Nam, Laos
630	Phong Nam, Laos
7.800	Phong Nam, Laos
10.280	Phong Nam, Laos
1.189	Phong Nam, Laos
9.658	Phong Nam, Laos
9.356	Phong Nam, Laos
8.715	Phong Nam, Laos
561	Phong Nam, Laos
357	Phong Nam, Laos
256	Phong Nam, Laos
550	Phong Nam, Laos

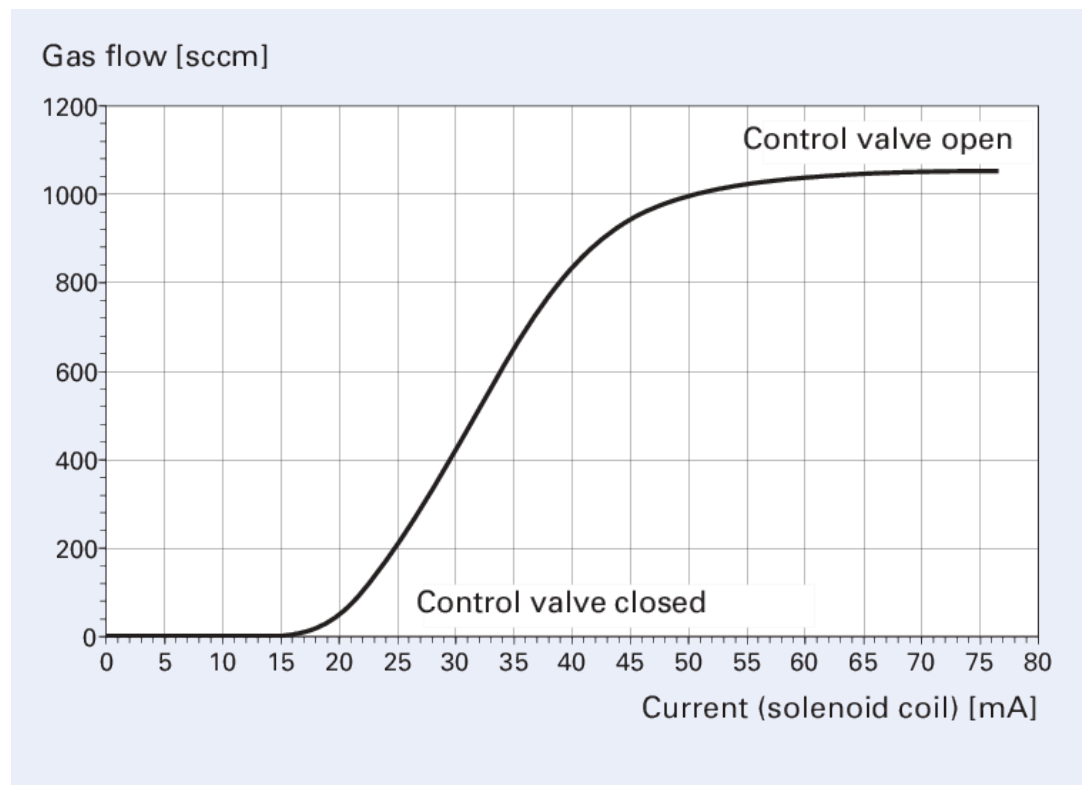
RME 005 A



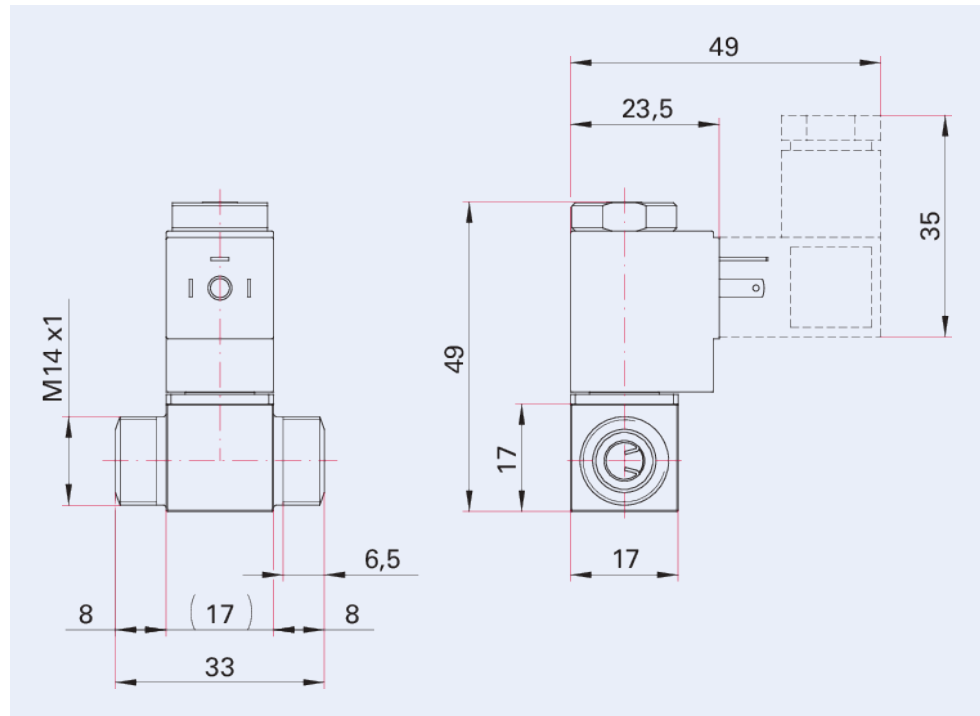
RME 005 A, Gas regulating valve, solenoid actuated, control range from 0.17 to 17 hPa l/s

- Two connections and a connection cable required as accessories
- Drive: Solenoid
- Regulating range from 0.17 to 17 hPa l/s
- Normally closed (n. c.)

Characteristics



Dimensions



Technical Data

	RME 005 A, Gas regulating valve, solenoid actuated, control range from 0.17 to 17 hPa l/s		
Gas flow min. controllable	$1.7 \cdot 10^{-1}$ hPa·l/s		
Gas flow max. controllable	$1.7 \cdot 10^1$ hPa·l/s		
Duty cycle	100 %		
Supply: Power consumption max.	2.5 W		
Control voltage	0 – 24 V DC		
Seal	FKM		
Type	Gas control valve		
Ambient temperature	5 – 50 °C		
Housing	Stainless steel		
Mounting orientation	Arbitrary		
Actuator	Electromagnetic		
Control	RVC 300		
Tightness	$1 \cdot 10^{-10}$ Pa m ³ /s	$1.33 \cdot 10^{-8}$ Torr l/s	$1 \cdot 10^{-8}$ mbar l/s
Pressure max.	2,000 hPa 1,500 Torr 2,000 mbar		
Min. controllable gas flow	$1.7 \cdot 10^{-1}$ hPa·l/s		
Max. controllable gas flow	$1.7 \cdot 10^1$ hPa·l/s		
Bakeout temperature: actuator, de-energized	80 °C 176 K -193.2 °F		
Pressure min.	$1 \cdot 10^{-8}$ hPa $7.5 \cdot 10^{-9}$ Torr $1 \cdot 10^{-8}$ mbar		
Weight	96 g		
Pressure max.	2,000 hPa		
Response time	30 ms		
Power consumption max.	2.5 W		
Connection flange	DN 5 mm M14x1 Thread		
Weight	96 g		

Order number

	RME 005 A, Gas regulating valve, solenoid actuated, control range from 0.17 to 17 hPa l/s		
RME 005 A, Gas regulating valve, solenoid actuated, control range from 0.17 to 17 hPa l/s	PF I13 932		

Your Success. Our Passion.

We give our best for you every day –
worldwide!

Are you looking for an optimum vacuum solution?

Talk to us:

Pfeiffer Vacuum Components & Solutions GmbH Germany

T +49 551 99963-0

info-cs@pfeiffer-vacuum.com

Or scan the barcode, to visit our web page:



<https://webportal.pfeiffer-vacuum.com/global/en/contact>



Errors and/or changes excepted. - 9/6/2024

Follow Us On Social Media
#pfeiffervacuum



www.pfeiffer-vacuum.com

PFEIFFER  **VACUUM**